



at University of California, Irvine

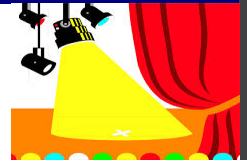
THE OUTLOOK

The Monthly Newsletter of OLLI at UCI

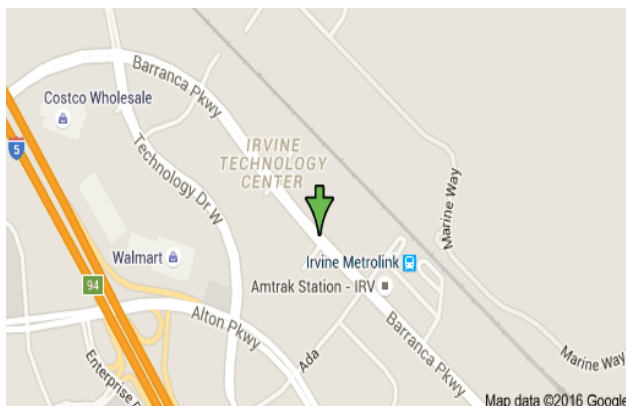
Volume 18 Issue 9

APRIL 2016

SPOTLIGHT



Have you heard the rumor? **We're planning to move to 15277 Barranca Parkway, near The Irvine Station, at the beginning of August!** See the map below, or [click this link to view an interactive map](#) and to obtain driving directions to our new location. We will be located in the front of the parking structure which faces Ada, about 4 miles from our current classroom. Discover which route will be best for you.



We plan to keep you fully informed about our upcoming move so we created a website just for that purpose. Click [here](#) to visit that site. Go there anytime to keep up-to-date on our building progress, future groundbreaking ceremony and open house - and more.

CALL FOR VOLUNTEERS

TO MAKE THIS A SPECTACULAR MOVE



As a relatively new member of the OLLI Board, I have accepted responsibility for three areas: Fundraising, Membership and Outreach. While the OLLI Board has been occupied with the new location, I have been formulating plans for all three areas. Now, we need volunteers to assist in implementing these programs.

Fundraising:

- (1) We will be establishing a Wall of Recognition to honor our donors and a *Tree of Knowledge* with the names of major donors engraved on leaves.
- (2) We will have a *Chair of Learning* plaque, recognizing donors who contribute to our need for more seating.
- (3) A donor gala dinner will be held at the new facility in early September.
- (4) We will have two special *Wine with Food* fundraising events on September 16 and 23.

Membership:

A major membership drive will be focused on the cities of Irvine and Laguna Woods. The closer proximity of our new facility to these population centers should be attractive to seniors living there. New materials are being developed to assist in this campaign.

Outreach:

OLLI @ UCI is still relatively unknown in Orange County. We need to establish outreach programs to the entire community and especially to the Asian community which is surprisingly under-represented in OLLI at UCI.

**Volunteers are needed to assist in developing
and implementing all of these programs and events.**

If you would like to participate in any of these three areas, please contact me at ajglasky@cox.net. Let me know which area is of interest to you. Please consider giving a little of your time to these important endeavors.

Thanks,
Al Glasky
Director, Organizational Development

THE BOARD'S CORNER



Our move to the The Irvine Station site is set for the next semester, Fall 2016, and our Curriculum Committees have almost completed the roster of classes. The wonderful news is that with over 130 seats, few classes will have to close and none will move. Do use our new website to learn all the "ins and outs" of the site and routes to it. See the first entry of this newsletter.

To keep our organization viable, we always need volunteers, so in addition to those that Al Glasky mentioned earlier in the newsletter who will spearhead our move and its needs, we will also need some new members for our Board. Please contact Jeff Elias at jgelias1@gmail.com to let him know if you can help OLLI in some capacity.

Finally, two slight name changes: The former Irvine Transportation Center, our new site, is now simply identified as *The Irvine Station*. In addition, Extension at UCI will be known as the *Division of Continuing Education at UCI*, making it very clear that we, along with many others, are an important part of its mission.

Pat Linehan

President, OLLI at UCI

Minutes Notice

The Minutes of the March 23, 2016 Board of Directors' meeting, to be approved at the April 27 meeting, are posted on the OLLI bulletin board at the back of the Woodbridge Onken Classroom and on the OLLI blog.

Donors List

The updated Donors list is posted on the OLLI bulletin board at the back of the Onken classroom and on our blog. Click [here](#) to go to the blog and then click on *Thank you for giving*. Thanks to all who participate in helping OLLI at UCI retain the ability to offer the programs we enjoy.

In Memoriam

Charles Melfi, August, 1934 to February, 2016, a long-time OLLI member, served on the Board of Directors and was a founder of the Bridge Group. He is survived by Ann Lambert Melfi, his wife of 53 years, daughter Lisa Bain of Denver, son Michael of Irvine, and grandchildren Nicholas and Eleanor Bain.

Jean Hamilton Aldrich, September 1919 to March 23, 2016, the inaugural first lady of UCI and wife of founding Chancellor Daniel G. Aldrich, was a strong supporter of

lifelong learning and attended OLLI classes in its formative years. She is survived by her children Dan, Liz, and Stuart; her seven grandchildren; and her 16 great-grandchildren.

TRIPPING & EVENTS WITH OLLI, SPRING 2016

These events still have some room. Guests are welcome! Register at our website (extension.uci.edu/olli) or call 949-824-5414.

[Holocaust Museum](#) (SE 58)

Sunday April 10 8:15AM to 5PM

Price: \$65 Click [here](#) for museum details and images.



Holocaust
Museum



DRAMA NEWS

[Music Theatre at UCI](#)

(SE 54) Second Session

Thursday, April 28

10 AM-Noon in Winifred Smith Hall.

A concert of four original 15 minute mini-musicals written and rehearsed during UCI's New York Satellite Program by UCI Students. Talk back with Director Myrona DeLaney and students after the performance. **Free and open to the public. No need to register for this event. All are welcome.**

Having an audience is an important part of Drama students' education.

The UCI Drama Department grateful to the OLLI members for their support of the programs and of the students who are learning the craft.

COMING UP SOON ON THE UCI STAGES:

[Director's Voice II: An enemy of the People](#) (SE 63)

Sunday May 1 - Pre-show Director's Talk at 1:00 PM

Performance at 2:00 PM in the Little Theatre. \$14.50

Director's Voice III: Evita (SE 64)

Saturday, May 28 - Pre-show Director's Talk at 1:00 PM

Performance at 2:00 PM in the Irvine Barclay Theatre. \$16.50

There are still a few seats left for these shows!

REGISTER BY THURSDAY, APRIL 7 online at extension.uci.edu/olli or by phone at 949-824-5414 and press 0 to talk to an enrollment specialist.

Fall Tours with OLLI and World Premier Travel

Travel Meeting 1:30 April 21 Onken classroom

Join other OLLI members already confirmed for the Great Canadian Cities.



GREAT CANADIAN CITIES

September 21-29, 2016

\$300 reservation due May 31 for \$100 booking discount.

These prices are per person based on double occupancy.

Final payment due July 8.

Click [here](#) for more details.

NATURAL WONDERS OF COSTA RICA

November 2-10, 2016

Reservation is \$500 due by May 31 to be eligible for the \$200 booking discount. These prices are per person based on double occupancy. Click [here](#) for more details.



Questions? Contact Leslie Barnebey at dr.barnebey@att.net
More detail explained at April 21 meeting in the Woodbridge Onken classroom



See flyers on side table below "Tripping."

OLLI INFORMATION

Spring Class Changes

Be sure to update your calendar and catalog with the following:



The Supreme Court : Hot Topics (SS 315)

Fridays, April 29, May 6, May 13, 1:30-3:00 PM

Moved from Woodbridge to UCI's **University Club**.

University Club parking is limited to 100 spaces, so carpool, arrive early, or see directions in the Woodbridge Onken Classroom for closest visitor parking at the Anteater Parking Structure. See also page 41 of the Spring catalog for a map and parking information.

Announcing the Dates for our 2016 Summer Lite Program

Monday, June 27 through Friday, July 22 at Onken, Woodbridge Center. More information coming!

Add Additional Spring Classes

Remember, effective February 16, members can enroll in additional classes with openings. Log in to your account or phone 949-824-5414.

OLLI'S BULLETIN BOARDS

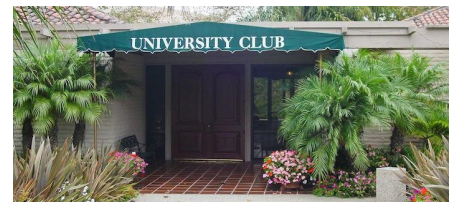
- UCI's Department of Psychology and Social Behavior needs volunteers for a two-hour study. *See UCI section below for more information.*

Note bulletin boards at the back of the classroom for the following:

- CASA volunteers needed for children in the court system.
- Volunteers 60 or older needed for UCI Mind study.
- Travel to London on a theater trip with UCI Drama.

UNIVERSITY CLUB FORUM

Coordinated by OLLI at UC Irvine and the University Club. Note the following changes in topics and speakers.



The Forum convenes for a Wednesday lunch and presentation at UCI's University Club. Lunch begins at 11:15 AM and is \$14 for OLLI members. Please call 949-824-7960, or e-mail uclubres@uci.edu to make reservations. Click [here to view the Spring schedule](#).

APRIL

April 6: Michael Dennin, Dean, UCI Undergraduate Education, and Professor, Physics and Astronomy. *Divine Science: Finding Reason at the Heart of Faith - the Intersection between Science and Religion.*

April 13: Jeffrey Kopstein, Chair, UCI Political Science, School of Social Science. *A Storm of Issues in the Middle East.*

April 20: Julia Lupton, Associate Dean, UCI School of Humanities and **Eli Simon**, UCI Chancellor's Professor of Drama, Claire Trevor School of the Arts. *Preview of Summer at the New Swan Theater.*

April 27: Matt Beckman, UCI Associate Professor, Political Science, School of Social Sciences. *Did Nixon Quit Before He Resigned?*

MAY

May 4: Michele Goodwin, Chancellor's Professor of Law. Director, Center for Biotechnology and Global Health Policy, School of Law, UCI. *Issues in Bioethics*.
Note: This is a change of speakers from the original schedule.

May 11: Richard Hasen, UCI Chancellor's Professor, Law and Political Science, School of Law. *Plutocrats United: Campaign Money, the Supreme Court and the Distortion of American Elections*.

May 18: Thomas Parham, UCI Vice Chancellor, Student Affairs. *Enhancing Diversity and Inclusion within the University; Changes Ahead*.

May 25: Barry Siegel, Professor, UCI Department of English and Director, Literary Journalism Program. *Judging State Secrets after Snowden - How?*

OLLI EXTRAS

Movie Talk

On **Saturday, April 30** at 10 AM, Woodbridge. Come to talk about everything you ever wanted to know about movies! Contact: Jessie Tromberg, jzt1@cox.net.



Spanish Conversation

Spanish Club will meet from 9:45-11:30 AM **Wednesdays** - April 6, 13, 20 at Ruby's, April 27 in the Woodbridge classroom.

The group chooses a topic for discussion (in Spanish) each week. New members are always welcome. Contact Sue Mendizza at mendizza@cox.net.

Bridge

Bridge is back for Spring semester with Instructor and Life Master Richard Anthony. Contact Carol Compton, carolcompton1@cox.net, 949-861-3820 or Ruth Grant, ruthgrant@cox.net, 949-551-5014 for more information. You do not need a partner and no reservations are required.

Bridge meeting dates for 2016 (in the Woodbridge Onken Classroom):

April 4, Monday at 1:30 PM

May 18, Wednesday at 1:30 PM



June 6, Monday at 1:30 PM

Bridge lesson handouts are posted on our blog at

<https://olliuci.wordpress.com/club-olli-bridge/>.

Mah Jongg

Calling all Mah Jongg players! We meet at 1:30 PM **every Tuesday** at Rancho Senior Center, 3 Ethel Coplen Way, on a drop-in basis. Guests are welcome. For more information, e-mail Estelle Elkin at estelle.elkin@att.net.

Travel Talk

Are you interested in sharing your trip and photos? Contact: Jessie Tromberg jzt1@cox.net. We'll put you on the calendar.

Gastronomers' Group

All about food, dining, and cooking - once a month, various locations. . . . Watch for KIT announcements. Interested? Contact Toni Dwyer at radatoni@cox.net.



INQUIRING MINDS

Critical Eye: Movie Reviews

MARGUERITE

Don't miss this small gem of a film! Set in the France of 1921, it is loosely patterned after a real person, one Florence Foster Jenkins, a wealthy American who aspired to operatic greatness but couldn't sing a note on key. *Marguerite* is her wealthy French counterpart. Catherine Frot delivers a superbly nuanced, utterly believable performance of self-deception.

Her character is sweet, loving, charmingly naïve and enabled by a weird cast of characters, particularly her butler-for-everything, much like Gloria Swanson's butler in *Sunset Boulevard*. The vocalizations are laugh-out-loud funny; it is a very satisfying film experience - unless of course you hate opera.

HELLO, MY NAME IS DORIS

Doris is a flat-out delight! Doris makes you laugh, makes you sigh, makes you shake

your head in disbelief; but best of all, Doris, aka Sally Field, performs an exacting gem. It does also help that everyone is perfectly cast, delivering another ensemble piece. Movies are collaborative ventures; this one really works.

WHISKEY TANGO FOXTROT

Please do not think this film featuring Tina Fey is a comedy. It is not. Fey is both star and producer and has dedicated the work to her recently deceased father who was a journalist and a soldier. The plot is all about soldiers, war, and the people who report about it. Real places, real people, real conundrums, but not really stellar performances. There are ironic edges, much to see, to examine, yet it quickly pushes to an equitable finale and leaves the audience feeling quite unsettled.

Jessie Tromberg jzt1@cox.net
OLLI Extras

OLLI Outlook welcomes member reviews--film, book, theater, exhibits--and will publish when space permits. See contact information for submission directions.

Library News - especially for our new members!



Love music? Love mathematics? Understanding the connections between music and mathematics helps you appreciate both.

Know the mathematics behind tuning an instrument or understand the features that define your favorite piece. Learn why non-Western music sounds so different. Gain insight into the technology of modern sound production. Hear the world around you in exciting new ways. Check out our newest OLLI library donation- *How Music and Mathematics Relate*.

Lynne Pendleton
OLLI Librarian

UCI CAMPUS EVENTS

Click [here](#) to view current information on events and activities at any of the UCI schools.



UCI Extension will have a new title beginning in the Fall of 2016 -- the **Division of Undergraduate Education**. This new name reflects the increasing importance UCI

is attaching to continuing education as a means for providing a **lifelong** education resource to the community. OLLI is happy to be a part of this division!

ILLUMINATIONS at UCI

Please click on "[here](#)" in the Events box at www.illuminations.uci.edu for a listing of what will be offered in 2016 and for important information on locations and registration.

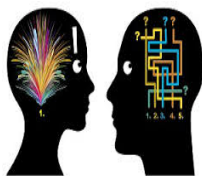
UCI's Law School's Outstanding Rankings

Erwin Chemerinsky, Founding Dean of UCI Law School, reported these impressive statistics about UCI's Law School:

- A recent study ranked the faculty 6th in the country in scholarly impact.
- U.S. News has UCI Law ranked No. 28 of 200 U.S. law schools.
- The school scored among the top 12 in student diversity.

OLLI has been fortunate to have Dean Chemerinsky speak to us on a range of topics, from freedom of the press to recent Supreme Court decisions. We appreciate his interest and congratulate him, the Law School faculty, and these students on their achievements.

EMOTION LAB NEEDS OLLI VOLUNTEERS



A two-hour study in UCI's Department of Psychology and Social Behavior needs adult volunteers who will receive \$40 compensation. If interested, please email emotion@uci.edu or call 949-824-3991 to leave your phone number. For more information, click [here](#) or look on the bulletin board.

OLLI AT UCI CONTACT INFORMATION

Office and Classroom

4662 Barranca Parkway
Irvine, CA 92604

Phone	949-451-1403
E-Mail	olli@uci.edu
Mailing Address	P.O. Box 6050 Irvine, CA 92616
Website	www.extension.uci.edu/olli
Blog	www.olliuci.wordpress.com
Facebook	www.facebook.com/UCIrvineExtension OLLI
Newsletter Deadline	Submit articles to Pat Linehan by the third Tuesday of each month at pblinehan@gmail.com .

OLLI BOARD OF DIRECTORS

President	Pat Linehan
V. P. Administration	Mike McGovern
V. P. Programs	Leslie Barnebey
Secretary	Nila Kyser
Treasurer	Sherri Nussbaum
Director, Volunteer Development	Jeff Elias
Director, Organizational Development	Al Glasky
Director, Parliamentary Procedures	Leah Jordan
Liaison, UC Irvine Extension	Kirwan Rockefeller
Office Managers	Barbara Barone and Karen McKenzie

Osher Lifelong Learning Institute at UCI | 949-451-1403 | olli@uci.edu | extension.uci.edu/olli

STAY CONNECTED:

