



at University of California, Irvine

# THE OUTLOOK

The Monthly Newsletter of OLLI at UCI

Volume 18 Issue 7

February 2016

## TRIPPING WITH OLLI, SPRING 2016

*These events still have some room. Guests are welcome! Register at our website (below) or call 949-824-5414.*

### SE 52: TREEPEOPLE'S DROUGHT SOLUTIONS TOUR

Looking for something to do Tuesday, February 16?



Learn more about the TreePeople organization

Join us on a trip to Coldwater Canyon Park, where we will visit the headquarters of TreePeople to learn



about their program of solutions to protect trees, conserve water and

preserve soil in the face of our crippling drought. Grounds are mostly flat but not handicapped accessible - no walkers or canes. Spectacular views of the San Fernando Valley. A box lunch is included. \$76. (Course description on page 29 in the Spring 2016 catalog.) Click [here](#) to go to the **TreePeople** website.

Event Date	Event Code	Event Name (Click name to view a description.)	Cost
March 8	SE 53	<a href="#">Beall Center:Traces of Vitality</a>	Free
March 29	SE 56	<a href="#">The Petersen Automotive Museum</a>	\$68
April 10	SE 58	<a href="#">The Holocaust Museum</a>	\$65
April 29	SE 59	<a href="#">Art Alive and Balboa Park Museums</a>	\$85
May 25	SE 61	<a href="#">La Brea Tar Pits and Farmer's Market</a>	\$70
March 6	SE 62	<a href="#">Director's Voice I: Woyzeck</a>	\$14.25
May 1	SE 63	<a href="#">Director's Voice II: An Enemy of the People</a>	\$14.50
May 28	SE 64	<a href="#">Director's Voice III: Evita</a>	\$16.50

### **NEW BONUS: Travel with OLLI and Premier World Travel**

We are partnering with Premier World Travel to offer trips to Cuba, Canada, and Costa Rica. Join us at an informational meeting at 1:30 PM on February 11 in the Woodbridge classroom. See page 33 in the Spring catalog and the Spotlight section of this newsletter for more details.

### **CLYBOURNE PARK**

Showing through February 7 at UCI's Robert Cohen Theater. Tickets for this wonderful play are still available through the UCI Box Office at 949-824-2787. Click [here](#) to view details of this great show.

**In the March newsletter look for information on FREE musical performances given as student finals. They are fantastic!**

---

## **THE BOARD'S CORNER**



First and foremost, **welcome to our new members.** We are delighted to have you join us and feel free to ask any questions you may have about how we function, especially at the New Member Orientation at 10 AM on

Monday, February 8, in the Woodbridge Onken Classroom. We are foremost volunteers: presenters, facilitators, curriculum committee members, board members, and the myriad of others who keep us functioning - just look at the right column on the inside cover of the Spring catalog. The next two pages also explain how to find answers to your questions.

As for our move to the Irvine Transportation Center, we are in the final stages of detailed plans from the city, so the actual construction will probably begin in April. As with any construction, the exact date is not set, but we are anticipating a move in the summer months. Look on the bulletin board, KIT Mail and upcoming Outlooks for progress reports. High ceilings for improved viewing, more seating capacity, and enhanced audio-visual capabilities are part of this location change.

Finally, our deepest appreciation to our office managers, Karen and Barb, as well as to the support staff at UCI Extension, who offer both knowledge and help to this organization. We could not function without them.

Pat Linehan  
President, OLLI at UCI

### **Minutes Notice**

The Minutes of the January 27, 2016 Board of Directors' meeting, to be approved at the February 24 meeting, are posted on the OLLI bulletin board at the back of the Woodbridge Onken Classroom and on the OLLI blog.

### **Donors List**

The updated Donors list is now posted on the OLLI bulletin board at the back of the Onken classroom or click [here](#) to view it online. Thanks to all who participate in helping OLLI at UCI retain the ability to offer the programs we enjoy.

---

## **OLLI INFORMATION**

### **Add Additional Spring Classes:**

Effective February 15, members can enroll in additional classes with openings. Log in to your account or phone 949-824-5414 and press 0.



## Spring Class Location and Time Changes:

Be sure to update your calendar and catalog with the following:

### **History Behind the Headlines (SS 302)**

Tuesdays

February 23, 2-4 PM

March 1, 2-4 PM

March 15, \*3-5 PM (note time change)

**Moved** from Woodbridge to UCI's **University Club**

### **The Cultural Influences of the Spanish Masters (AH 106)**

Tuesday, March 22, \*2-4 PM (note time change)

**Moved** from Woodbridge to UCI's **University Club**

### **The Supreme Court : Hot Topics (SS315)**

Fridays, April 29, May 6, May 13, 1:30-3:00 PM

**Moved** from Woodbridge to UCI's **University Club**

University Club parking is limited to 100 spaces, so carpool, be early, or see directions in the Woodbridge Onken classroom for closest visitor parking. See page 41 of the Spring catalog for a map and parking information.

## Attention Trained Facilitators

If you have attended a Facilitator Training, but have not yet been assigned to a class, please let me know as soon as possible. We are currently working on the program for Fall 2016 and want to place all trained facilitators.

Looking forward to hearing from you,

Jeff Elias

Director, Volunteer Development

jgelias1@gmail.com

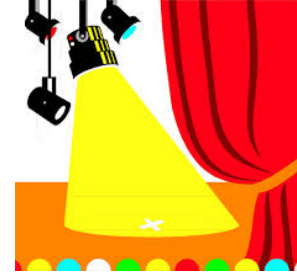
---

## SPOTLIGHT

**Travel With OLLI - to Cuba, Canada**

## and Costa Rica

Exciting news! OLLI at UCI is partnering with Premier World Discoveries to offer a trip to Cuba this Spring, as well as trips to Canada and Costa Rica in the Fall of 2016.



Each trip includes airfare, professional tour directors, most meals, motor coach transportation, hotels, transfers and baggage handling. If more than 10 OLLI members sign up for any one tour, transportation to and from Orange County to LAX will also be included.

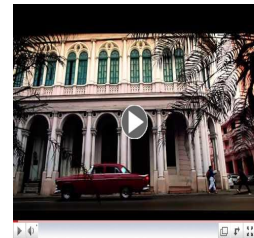
**Join us on Thursday, February 11 at 1:30 PM on in the Woodbridge classroom, to learn more about a trip to Cuba in April, and Canada and Costa Rica in the Fall.**

### **Discover CUBA - Highlights of Havana & Varadero** **April 13-20, 2016**



Enjoy an eight-day tour through vibrant and unique Cuba! Learn about the Plaza de la Revolucion, center of Cuban political life. Head to Manzas, also known as the Athens of Cuba. See the Sauto Theater, the San Carlos Cathedral, and visit with local artists.

Enjoy performances at the *Matanzas School of Art and Music*. Tour the *Colon Cemetery*, the *Nacional Hotel*, and more. Price: \$4999 per person double occupancy (\$100 discount for cash), \$600 single supplement.



Video Courtesy of Cuba  
Tourist Board

Click [here](#) to view more details of this exciting trip!

## **Fall Tours**



### **Great Canadian Cities**

**September 21-29, 2016**

**Click [here](#) for more details.**



## Natural Wonders of Costa Rica

November 2-10, 2016

Click [here](#) for more details.

---

## UNIVERSITY CLUB FORUM

Coordinated by OLLI at UC Irvine and the University Club. Note the following changes in topics and speakers.



The Forum convenes for a Wednesday lunch and presentation at UCI's University Club. Lunch begins at 11:15 AM and is \$14 for OLLI members. Please call 949-824-7960, or e-mail [uclubres@uci.edu](mailto:uclubres@uci.edu) to make reservations. Click [here to view the Winter schedule](#).

### FEBRUARY

**February 3: Elizabeth Allen, Ph.D.**, UCI Associate Professor of English, School of Humanities. *Uncertain Refuge - Ideas About What It Means to Seek Sanctuary in the Middle Ages and Beyond.*

**February 10: George Tita, Ph.D.**, UCI Professor of Criminology, Law and Society. *Making Sense of Crime Fluctuation Levels.*

**February 17: Crystle Martin, Ph.D.**, UCI Research Fellow. *The Future of Libraries: Becoming Centers of Innovation and Learning.*

**February 24: Mark Mapstone, Ph.D.**, UCI Professor of Neurology, Institute for Memory Impairments and Neurological Disorders. *Detecting Those at Risk for Alzheimer's Disease.*

### MARCH

**March 2: Michael Tesler**, Ph.D., UCI Assistant Professor of Political Science. *Shattered: Breaking Down the 2016 Election*.

**March 9: Gary Busby**, M.M., D.M.A., UCI Chair of Drama. *Freaks, Geeks, and Others: The Making of a Drama Season*. Enjoy a sneak peek of the 2016 season's offerings from the perspective of directors and cast members.

---

## OLLI EXTRAS

### Movie Talk

One Saturday morning a month, a group of us gathers to talk about recent movie encounters. We share insights, information, gripes and gossip. Next meeting is Saturday, February 27, 10 AM - 12 Noon, Woodbridge. No reservations required. Questions? Contact Jessie Tromberg, [jzt1@cox.net](mailto:jzt1@cox.net).



### Spanish Conversation

Spanish Club will meet from 9:45 -11:30 AM Wednesdays in February in the Woodbridge classroom. The group chooses a topic for discussion (in Spanish) each week. New members are always welcome. Contact Sue Mendizza at [mendizza@cox.net](mailto:mendizza@cox.net) for information.

### Bridge

**Bridge is back** for Spring semester with Instructor and Life Master Richard Anthony. Contact Carol Compton, [carolcompton1@cox.net](mailto:carolcompton1@cox.net), 949-861-3820 or Ruth Grant, [ruthgrant@cox.net](mailto:ruthgrant@cox.net), 949-551-5014 for more information. You do not need a partner and no reservations are required.

#### Bridge meeting dates for 2016:



February 15, Monday at 1:30 PM  
March 7, Monday at 1:30 PM  
March 28, Monday at 1:30 PM  
April 4, Monday at 1:30 PM  
May 18, Wednesday at 1:30 PM

June 6, Monday at 1:30 PM

## Mah Jongg

Calling all Mah Jongg players! We meet at 1:30 PM every Tuesday at Rancho Senior Center, 3 Ethel Coplen Way, on a drop-in basis. Guests are welcome. For more information, e-mail Estelle Elkin at [estelle.elkin@att.net](mailto:estelle.elkin@att.net).

## Travel Talk

Once a month or so, on a Saturday morning, our members tell of their travels around the world and share their photos. Next meeting is Saturday, February 20, 10 AM-12 Noon in the Woodbridge classroom. Interested in sharing your trip? Contact Jessie Tromberg ([jzt1@cox.net](mailto:jzt1@cox.net)) or Lonnie Horn ([mail4lonnie@aol.com](mailto:mail4lonnie@aol.com)) and we'll put you on the calendar.

## Gastronomers' Group

All about food, dining, and cooking. On January 13, sixteen enthusiasts met over dinner and planned events for the rest of the year. Watch for KIT news of the next event. Contact Toni Dwyer at [radatoni@cox.net](mailto:radatoni@cox.net) or Jessie Tromberg at [jzt1@cox.net](mailto:jzt1@cox.net).



---

## INQUIRING MINDS

### Critical Eye: Movie Reviews

#### *Carol*

Based on a novel called *The Price of Salt* by Patricia Highsmith, this 1950s-era story of lesbian romance between upper crust Carol and a young shopgirl, succeeds only through Cate Blanchette's determined performance.



Smiling with her very generous mouth and seductively narrowing her eyes, she glides through her scenes perfectly coiffed, costumed and mink coated. Do you care about her? Do you care about Therese, the longing-for-a-better-life shopgirl? That, I think, depends on how many of those stories you have read and how much you long to return to the Eisenhower years .

#### *The Revenant*

The title comes to us from the French, *revenir*...to return from a long absence,



usually from the dead...and there you have the whole story.

Well, not exactly. Set in the 1820s in the Dakota Territories, shot in natural light, it's a tale of men at their most primitive levels. Survival over the elements, presented in bleak grandeur and splattered with copious amounts of blood in the snow, it is further spiced with an incredible *mano a mano* battle with a mama bear.

Leonardo DiCaprio is superbly fierce and I hope well compensated for all that he suffered in this role. To quote another film, "attention must be paid." It's a hard film to ignore.

### *The Lady in the Van*

This is not the movie you imagine it is. Yes, it is peppered with British type oddballs. Yes, it has many witty lines of dialogue steeped in literary references, but it is not a farcical romp. It's a dark movie layered with serious matters. Shining through it all is Maggie Smith's nuanced performance as that Lady in the Van. It is not a *Downton Abby* Xerox version of a character; it is sensitive, lovely, touching, a tour de force. See it; even you men may like it.

Jessica Tromberg  
OLLI Extras

*OLLI Outlook welcomes member reviews--film, book, theater, exhibits--and will publish when space permits.*

## **Library News - especially for our new members!**



Welcome to the Spring 2016 semester of OLLI! Remember we have a small library of materials in the back of the Woodbridge Onken Classroom. The library materials have been donated by OLLI students eager to share the joy of learning with others. Come look at what is in the library, choose items and borrow them by signing them out on the clipboard by the shelves.

Much of the collection are multi-volume sets of CDs and DVDs produced by The Great Courses. Examples are *Nutrition made Easy*, *The Barbarian Empires of the Steppes*, and *Meteorology: An Introduction to the Wonders of Weather*. The Great Courses have recently partnered with National Geographic, the Culinary Institute of America, and the Smithsonian. You can

learn any time, any where with the world's greatest professors. Check them out at [www.getgreatcourses.com](http://www.getgreatcourses.com)

Lynne Pendleton  
OLLI Librarian

---

## UCI CAMPUS EVENTS

Click [here](#) to view current information on events and activities at any of the UCI schools.



## ILLUMINATIONS at UCI

Please click on "[here](#)" in the Events box at [www.illuminations.uci.edu](http://www.illuminations.uci.edu) for a listing of what will be offered in 2016 and for important information on locations and registration.

---

2015-2016 Chancellor's Distinguished  
Fellows Series and the  
International Studies Public Forum Present

### Life, Death and Hope Among the Urban Poor in India



#### **Katherine Boo**

Staff Writer, *The New Yorker*  
& Pulitzer Prize winning author.

Thursday, February 4, 2016

Lecture | 5:00 - 6:30 p.m.

Reception & Book Signing | 6:30 - 8:00 p.m.

Paul Merage School of Business (SB1)

Auditorium | Room 1200

*\*\*Book signing will take place during the reception from 6:45 - 7:15 p.m.*

---

## OLLI AT UCI CONTACT INFORMATION

	Irvine, CA 92604
Phone	949-451-1403
E-Mail	<a href="mailto:olli@uci.edu">olli@uci.edu</a>
Mailing Address	P.O. Box 6050 Irvine, CA 92616
Website	<a href="http://www.extension.uci.edu/olli">www.extension.uci.edu/olli</a>
Blog	<a href="http://www.olliuci.wordpress.com">www.olliuci.wordpress.com</a>
Facebook	<a href="http://www.facebook.com/UCIrvineExtension">www.facebook.com/UCIrvineExtension</a> OLLI
Newsletter Deadline	Submit articles to Pat Linehan by the third Tuesday of each month at <a href="mailto:pblinehan@gmail.com">pblinehan@gmail.com</a> .

## OLLI BOARD OF DIRECTORS

President	Pat Linehan
V. P. Administration	Mike McGovern
V. P. Programs	Leslie Barnebey
Secretary	Nila Kyser
Treasurer	Sherri Nussbaum
Director, Volunteer Development	Jeff Elias
Director, Organizational Development	Al Glasky
Director, Parliamentary Procedures	Leah Jordan
Liaison, C Irvine Extension	Kirwan Rockefeller
Office Managers	Barbara Barone and Karen McKenzie

Osher Lifelong Learning Institute at UCI | 949-451-1403 | [olli@uci.edu](mailto:olli@uci.edu) | [extension.uci.edu/olli](http://extension.uci.edu/olli)

STAY CONNECTED:

