

# THE OUTLOOK

*The Monthly Newsletter of OLLI at UCI*

*Fall 2023*

Volume 26 Issue 4

October 2023

## PRESIDENT'S MESSAGE



### Autumn Greetings to Everyone

Fall is officially here and our 26<sup>th</sup> academic year is underway. Looking at the class rosters I can see that there is great interest in the offerings this semester. I have heard members say they are enrolled in a dozen or more classes!

Please remember that the Monday morning KIT-mail is an important tool for staying aware of the week's classes, schedule changes, and new courses or activities that have been added.

We need to reach 500 members this year to retain our Osher Endowment. We are actively working on a digital and print marketing campaign. We also have a team reaching out to the community with catalog distribution, and booths at community events. Word of mouth is by far our best source of new members so I encourage you to invite family and friends to join us for a free class.

We have tables at the back of the classroom to encourage casual conversations and impromptu gatherings before and after class. Come early, stay late, and share your ideas.

Stay curious!

Lonnie Horn  
President, OLLI at UCI

**OLLI at UCI**  
**One Bring One**  
**FREE!**  
**Guest Class Voucher**

View our Catalog and Class Schedule  
at [ce.uci.edu/olli](http://ce.uci.edu/olli)

**Class Space Availability**  
call 949-451-1403 or e-mail [olli@uci.edu](mailto:olli@uci.edu)



# BOARDS CORNER

## OFFICIAL INFORMATION

The minutes of the September 2023 Board Meeting will be approved at the October Board Meeting and will be posted on the [OLLI Blog](#) along with past Board Meeting minutes.



# OLLI at UCI

## UPCOMING EVENTS

OLLI at UCI Fall 2023

# Social Hour

Friday, October 6  
4:00 PM - 5:30 PM

OSHER  
LIFELONG  
LEARNING  
INSTITUTE

at University of California, Irvine

**OLLI Social Hour** is open to all members and is a wonderful opportunity to meet both OLLI members as well as our OLLI Board of Director's. Hosted by your OLLI BOD, this event will be an hour+ that you won't



want to miss from **4:00 PM - 5:30 PM** after the following class:

- Friday, October 6, after SS 303 European History Series: Renaissance of Western Europe.
- RSVP to [olli@uci.edu](mailto:olli@uci.edu)

# OLLI at UCI SPECIAL EVENTS


(Click on the image to register)



**PINOT NOIR AROUND THE WORLD**  
An OLLI Fundraising Event  
SE 412

Date: Saturday, October 28  
Time: 3:00 PM – 5:00 PM  
Cost: \$40.00 includes wine, snacks, and a donation to OLLI  
(NOTE: Please bring 3 wine glasses for the tastings.)  
Location: OLLI classroom, 15207 Barranca Parkway Irvine

Join us for a relaxing Saturday afternoon with OLLI friends, tasting Pinot's from around the world, chosen by our favorite wine expert and longtime member, Al Glasky. Pinot Noir has a unique profile dominated by aroma compounds known as esters. These give it a complex array of flavors, from ripe cherry and raspberry to intriguing undertones of forest floor, tea leaves, and sometimes even clove. On the nose, Pinot Noir is all about the symphony of red fruits. Yet, it also unveils layers of earthiness, spice, and, when oak-aged, gentle whiffs of vanilla and smoke. As it ages, you might catch hints of mushroom and leather. On the palate, Pinot Noir is usually light to medium-bodied, with lower tannins (thanks to thinner skins) and high acidity, making it a wine of grace and subtlety.



**BOWERS MUSEUM:**  
A Great Wave  
SE 404

Date: Tuesday, October 31  
Time: 1:00 PM – 2:00 PM  
Cost: \$40  
Location: Self-drive to Bowers Museum  
2002 N. Main St., Santa Ana

**Beyond the Great Wave: Works by Hokusai from the British Museum**

Sublime, energized, intense. Words that describe the works of renowned Japanese artist Katsushika Hokusai. His seminal work, *The Great Wave*, is considered one of the most iconic prints ever made. This exhibition includes a beautiful early example of *The Great Wave* and a selection of other works created over a 70-year career. Hokusai inspired many collectors and European artists such as Monet and Van Gogh. Our docent-led tour follows a presentation at OLLI on October 28th by Bowers Museum Director of Exhibition Development. Also enroll in AH 111 for Bowers Presentation.



**COME FROM AWAY:**  
OLLI on Broadway  
SE 406

Date: Saturday, November 11  
Time: 11:30 AM - 2:30 PM  
Cost: \$50 includes lunch  
Location: OLLI Classroom

September 11, 2001. You're on a plane heading to New York. The pilot suddenly announces that the flight has been diverted. This filmed version of the hit Broadway musical *Come From Away* takes you into the heart of the remarkable true story of 7000 stranded passengers and the small town in Newfoundland that graciously welcomed them.


OLLI's extra-large classroom screen shows faces up close that pull you into the story as if you are there. You'll both laugh and cry as closed captions capture every word. Join us for lunch and a show.

**DIRECTOR'S VOICE I: Cabaret**  
SE 407

Date: Sunday, November 12  
Time: 1:00 PM - 4:30 PM  
Cost: \$20  
Location: Self-drive to UCI Claire Trevor Theatre

"Leave your troubles outside! Life is disappointing? Forget it! An American author falls in love with a cabaret performer in Berlin on the eve of WWII.


Many people forget that the first country the Nazis invaded was their own; *Cabaret* warns of the dangers of ignoring hate, fascism, and dangerous political movements. *Cabaret* is sure to make you laugh, cry, and help you question where your identity lies as you walk back into reality.



**OLD ORANGE COUNTY COURTHOUSE:**  
Court is in Session  
SE 403

Date: Friday, December 15  
Time: 10:00 AM – 12:00 PM  
Cost: \$25  
Location: Self-drive to Old Orange County Courthouse  
211 W. Santa Ana Boulevard, Santa Ana, CA 92701



It started out as a jail. It's a museum now and you can get married here too. The Old Orange County Courthouse built in 1901 of granite and red sandstone is an eye-popping example of Renaissance Revival architecture in the Santa Ana Historical District. Completely restored in 1992 to look as it did at the turn of the century, archives highlight events and court proceedings that shaped Orange County's early history. A docent leads us through the stoned old building that is part of our local heritage. Enjoy lunch on your own in Old Santa Ana.



**CRIME AND PUNISHMENT OLLI STYLE**  
Back by Popular Demand!

SE 409  
Date: Friday, December 8  
Time: 10:00 AM – 12:00 PM  
Cost: \$10  
Location: Self-Drive to OC Crime Lab, Santa Ana

Be careful where you leave your shoe prints. The Orange County Crime Laboratory (OCCL) provides all public law enforcement agencies in the County with services for collecting, evaluating and recognizing physical evidence. A guide takes us through multiple sections of the Laboratory including toxicology, forensics, firearms and more.

**ORANGE COAST COLLEGE PLANETARIUM 2023:**  
A Space Odyssey  
SE 410

Date: Wednesday, December 13  
Time: 11:00 AM – 1:00 PM  
Cost: \$25 Plus parking  
Location: Self-drive to Orange Coast College, Costa Mesa

A guide takes us through images of mysterious other worlds that share our solar system.

Immerse yourself in faraway constellations, star clusters and other wonders of the universe at the new Orange Coast College state-of-the-art Planetarium.

Bounce around the surface of the moon. See an astronaut's eye-view of the earth as it changes by the minute.


A 70-foot diameter dome in the heart of the campus peeks out from the center of the galaxy mimicking the Milky Way. Look up and touch the cosmos right here in Orange County.



**DIRECTOR'S VOICE II: KING LEAR**  
SE 411

Date: Sunday, January 28, 2024  
Time: 1:00 PM – 4:30 PM  
Cost: \$20 Includes Director's Talk and Performance  
Location: UCI Claire Trevor Theatre, Irvine

Considered among Shakespeare's greatest tragedies, *King Lear* tells of a parent's love and loss amongst the greed of his children. Preparing to split up his kingdom, Lear asks his three daughters how much they love him. His youngest, Cordelia, says she cannot quantify her love. He disinherits her and gives his kingdom to his other daughters, then finds himself spurned by those around him, and driven to insanity in his old age. *Lear* speaks to the love we have for our children and the fear of aging and death.





# OLLI at UCI MONTHLY MEETING SCHEDULE

OLLI members are invited to attend any meeting and share your ideas for making our OLLI the best it can be! Email your RSVP to the Team Chairperson of the meeting you are interested in attending.

Have an idea for a new class or Special Event/Experience Trip?  
Email [olli@uci.edu](mailto:olli@uci.edu)

### **Finance Committee**

Email Sherri Nussbaum at:  
[sherrilynn@audiblerush.com](mailto:sherrilynn@audiblerush.com)  
**Monday, October 23 (12:00 PM)**  
Location: OLLI Classroom

### **Marketing Committee/Outreach**

Email OLLI at: [olli@uci.edu](mailto:olli@uci.edu)  
**Friday, October 27 (1:30 PM)**  
Location: OLLI Classroom

### **Special Events Team**

Email Linda Vine at:  
[vines1219@gmail.com](mailto:vines1219@gmail.com)  
**Monday, October 2 (1:00 PM)**  
Location: OLLI Classroom

### **Arts & Humanities Team**

Email Yasmin Vali at:  
[yivali@uci.edu](mailto:yivali@uci.edu)  
**Thursday, October 12 (4:00 PM)**  
Location: Zoom

### **Social Science Team**

Email Linda Robinson at:  
[robinson.linda@ymail.com](mailto:robinson.linda@ymail.com)  
**Thursday, October 12 (1:30 PM)**  
Location: OLLI Classroom

### **STEM Team**

Email Marj Besemer at:  
[mlbesemer@cox.net](mailto:mlbesemer@cox.net)  
**Tuesday, October 3 (10:00 AM)**  
Location: OLLI Classroom



# OLLI EXTRAS

## **OLLI Extras are for the mind and for the fun!**

Members and Non-Members are welcome to join OLLI Extras!!!  
For more information, contact the corresponding team lead below.





## FORE!

OLLI has an exciting new opportunity to gather together GOLFERS who are interested in forming new friendships and playing local courses on a regular basis.

We are looking to find all of those men and women who love the game and the camaraderie which the game facilitates.

**All skill levels are welcome!**

If you are interested please contact Harry Field by email at: [hbf214@yahoo.com](mailto:hbf214@yahoo.com)



## ¿Hablas español?

Join other OLLI members for conversational Spanish!

For more information contact Deborah Silverstein at: [sjsdns7@gmail.com](mailto:sjsdns7@gmail.com)



## Bridge Lessons for new and returning players!

*Always wanted to learn?  
Played decades ago?  
Want to relearn?  
Curious?*

**Now is your chance!**  
Challenge your brain, meet great fun-loving people!  
Enjoy the **BEST HOBBY EVER!**

**Face to Face Classes:**  
South Orange County Bridge Center at: [31461 Rancho Viejo Road, Suite 205, SJC](#)

For full details contact:  
Janie Matlaf at: 949-233-2140  
or [jmatlaf@gmail.com](mailto:jmatlaf@gmail.com)

## Travel Talk



## Travel Talk

With OLLI at UCI President, Lonnie Horn!

For more information contact Lonnie Horn at: [mail4lonnie@aol.com](mailto:mail4lonnie@aol.com)



OLLI  
Gastronomers  
Club

## OLLI Gastronomers Club

If you'd like to join other OLLI members for monthly Gastronomers events, visit their website at: [olligastronomers.com](http://olligastronomers.com)



## MOVIE TALK

## MOVIE TALK

**When:** Saturday, October 7

**Time:** 10:00 AM

**Where:** OLLI Classroom

All are invited, bring a guest for a taste of OLLI at UCI

RSVP with Jessie Tromberg:

[jessietromberg@icloud.com](mailto:jessietromberg@icloud.com)



## CRITICAL EYE

MOVIE REVIEWS BY: JESSIE TROMBERG

## MOVIE TALK

**When:** Saturday, October 7

**Time:** 10:00 AM

**Where:** OLLI Classroom

All are invited, bring a guest for a taste of OLLI at UCI

RSVP with Jessie Tromberg:

[jessietromberg@icloud.com](mailto:jessietromberg@icloud.com)

# UCI CAMPUS EVENTS



## UCI TODAY

Click [here](#) to view ALL upcoming UCI events.

## UCI-DCE (Division of Continuing Education)

OLLI Members can view FREE upcoming events as well as on demand past events, through UCI-DCE. Click [here](#) to view current and prerecorded webinar's on a variety of subjects for the lifelong learner!

## UCI-DCE Magazine

Issue 25: Winter 2023

To view click [here](#).

To view past magazine issues click [here](#).



---

OLLI at UCI partners with the UCI Division of Continuing Education and members can attend webinars through UCI-DCE for **FREE!**

With October being Emotional Intelligence Month, UCI-DCE is hosting a free Author Series webinar, "Beyond the Book," this Wednesday, October 4th from 12:00 PM - 1:00 PM. Author Farah Harris will discuss how there are more shades of emotional intelligence than we might think. Have you wondered what your color of EQ is? Please register [here](#) as Farah Harris discusses her book: The Color of Emotional Intelligence.



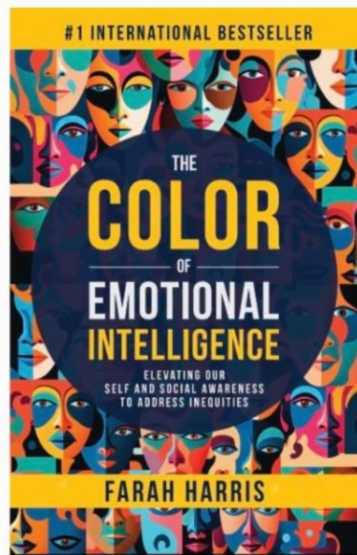
## THE COLOR OF EMOTIONAL INTELLIGENCE

- Free Webinar
- Wednesday, October 4
- 12pm-1pm PDT

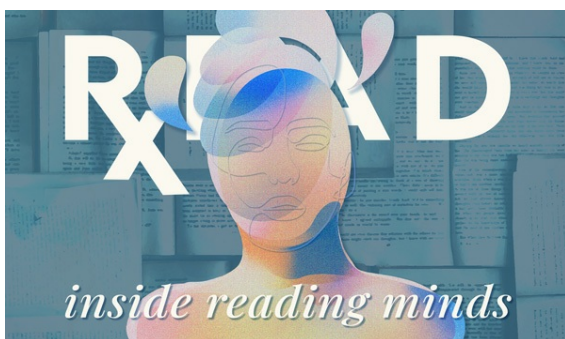


**SPEAKER** Farah Harris: psychotherapist, author, and workplace belonging and well-being expert dedicated to disrupting unhealthy work environments.

UCI Continuing Education



## UCI LIBRARIES: CURRENT EXHIBITS



### Exhibit | Inside Reading Minds: Grunigen Medical Library RxEAD Posters, 2006–2020

The American Library Association's Celebrity READ Campaign helps promote reading by featuring high-profile celebrities with their favorite books. Since 1980, more than 150 celebrities including actors, musicians, athletes, and innovators have participated in the campaign to spread the joy of reading.

Curated by Anna Arrieta, GML Library Assistant, Interlibrary Loan; Cynthia Johnson, Head, Reference and GML; and Sakhile Sithole, GML Library Assistant, IT Liaison; Edited by Christina Acevedo and Cheryl Baltés; Designed by Allan Helmick, Sylvia Irving, and Luisa Lee

### Visitor Information:

[Inside Reading Minds: Grunigen Medical Library RxEAD Posters, 2006–2020](#) will be on display on the 2nd floor of the Science Library beginning March 2023 during regular [library hours](#).

### UPCOMING Exhibit | 400 Years of Shakespeare's First Folio

Published in 1623, Shakespeare's First Folio was a landmark of printing at the time and, as of 2020, is the most expensive piece of literature ever auctioned. Printed seven years after

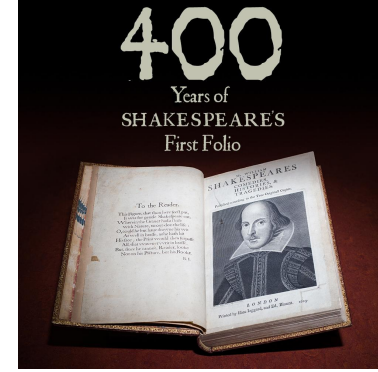


Shakespeare's death, the First Folio was the first compilation of his plays, 18 of which had never been published before.

Curated by Derek Quezada, Rare Books Librarian at USC

Edited by Christina Acevedo and Cheryl Baltes

Designed by Allan Helmick, Sylvia Irving, and Luisa Lee



## Visitor Information:

[400 Years of Shakespeare's First Folio](#) will be on display in the [Langson Library](#) May through December 2023 during regular [library hours](#).

# CLAIRE TREVOR SCHOOL OF THE ARTS



**UCI** Claire Trevor School of the Arts

Emerging Brighter!

We recommend that you register in advance for the event(s) you wish to attend. Click [here](#) to view all events.

**Drama Events** - Click [here](#) to view and register for upcoming events.

**Art Events** - Click [here](#) to view and register for upcoming events.

**Dance Events** - Click [here](#) to view and register for upcoming events.

**Music Events** - Click [here](#) to view and register for upcoming events.



**THANK YOU TO OUR DONORS!**



Your donations are making a difference! Click [here](#) to view the donations made from **July 1, 2022** through **June 30, 2023**.

### **We recognize all our donors!**

Donor names are listed in our Fall and Spring catalogs and also on our [OLLI at UCI](#) website - unless you choose to be anonymous. **Butterfly Level Pledge Donors** are also recognized with either a Gold, Silver, or Bronze butterfly plaque in

your name on our *Butterfly Wall of Recognition*.

### **Donate to match your financial needs**

Include OLLI at UCI in your *estate planning* or *transfer stock* on behalf of OLLI to the UCI Foundation.



- **Become a Butterfly Level Pledge Donor:**
  - **Gold Pledge Level** (\$2,500+)/year for 3 years
  - **Silver Pledge Level** (\$1,000 - \$2,499)/year for 3 years
  - **Bronze Pledge Level** (\$500 - \$999)/year for 3 years
- **Make a One-Time Annual Gift:**
  - **Angel Donor Level** (\$300+)
  - **Friend Donor Level** (\$15 - \$299)

### **Methods to Donate**

- **Online:** Donate online with your credit card using the secure UCI website. Click to open and complete this [form](#) on-line.
- **By Mail:** Print and complete this [form](#).

## **LEGACY GIVING - OLLI at UCI**



### **Spread the joy!**

Individuals 70 1/2 or older can now fulfill their required distributions through charitable rollovers.

For more information on how to reduce your taxable income while supporting OLLI at UCI click [here](#).





## OLLI at UCI FALL 2023 Semester Courses

### Send a **FREE** OLLI FALL 2023 Catalog to a friend

Click [here](#) if you would like to send a free  
OLLI catalog to a friend.

## CONTACTING US



### OLLI at UCI

Office hours: 9:00am - 4:00pm

[Irvine Train Station](#)  
[15207 Barranca Pkwy](#)  
[Irvine, CA 92618](#)

Phone: 949-451-1403

Email: [olli@uci.edu](mailto:olli@uci.edu)

Website: [ce.uci.edu/olli](http://ce.uci.edu/olli)

## VISIT US ON FACEBOOK



Osher Lifelong Learning Institute | 510 E. Peltason Drive, UCI Division of Continuing Education ,  
Irvine, CA 92617

[Unsubscribe olli@uci.edu](#)

[Update Profile](#) | [Constant Contact Data](#)  
[Notice](#)

Sent byolli@uci.edupowered by



Try email marketing for free today!